



ARCHDIOCESE OF WASHINGTON CATHOLIC SCHOOLS

2015-2016 ASSESSMENT PORTFOLIO

Saint John the Baptist School
Prepared June 2016



2015-2016

ASSESSMENT PORTFOLIO - OVERVIEW OF REPORTS

PAGE 1-2. FAITH KNOWLEDGE ASSESSMENT

- Page 1 - displays the school's overall performance (% of items correct) by Key Element on the 2016 Religion standardized test, grades 3-8 combined.
- Page 2 - displays the school's performance (% of items correct) by grade (3-8) and FDTNE Curriculum Standard on the 2016 Religion standardized test.
- Mastery is marked in green ($\geq 80\%$); Proficiency is marked in yellow ($\geq 60\%$ and $< 80\%$); Needs Further Instruction is flagged in red ($< 60\%$)

PAGES 3-4. OVERALL STANDARDS ITEM POOL SCORES (SIP-%) – BASELINE TEST vs. MID-YEAR TEST vs. END-OF-YEAR TEST

- The report displays the average SIP Score by grade level in Reading and Mathematics.
- The ADW end-of-year SIP Score target is 75% in Reading and Mathematics.
- The SIP Score is a grade-specific translation of the Scaled Score, in relation to curriculum standards.
- The overall SIP Score represents the projected understanding of the grade level test items.
- The SIP Scores from the Baseline Test (fall 2015), the Mid-Year Test (winter 2016) and the EOY Test (spring 2016) are displayed side by side to show the change in performance from beginning of the school year to the end of the school year.

PAGES 5-6. YEAR-OVER-YEAR (YOY) OVERALL STANDARDS ITEM POOL SCORES (SIP-%)

- The report draws attention to the difference in end-of-year, average SIP Scores from 2014, 2015 and 2016.
- The report displays the average SIP Score by grade level in Reading and Mathematics for 2014, 2015 and 2016.

PAGES 7-8. END-OF-YEAR STANDARDS ITEM POOL SCORE (SIP) TARGET MET/NOT MET

- The report displays the percent of students who met or exceeded the EOY SIP Score target of 75% and the percent of student who did not meet the target.

PAGES 9-10. GAINS ANALYSIS

- The report shows the percentage of students in each of the four growth categories in Reading and Mathematics, overall and by grade level.
- The scores indicate the percentage of students performing *far below*, *below*, *above*, and *far above* their annual growth target.
- A growth target is set for each individual student based on their Scaled Score on the Baseline Test (fall 2015).
- The growth target is determined by the observed average gains in the National norm group, and is calculated by decile.
- The school-level target for gains is 80% or more of students with average or above average gains (80% in *below*, *above* and *far above* growth categories.)



2015-2016

ASSESSMENT PORTFOLIO - OVERVIEW OF REPORTS

PAGE 11. YEAR-OVER-YEAR (YOY) OVERALL GROWTH

- The report shows the overall gains in Reading and Mathematics for each academic year - 2014, 2015 and 2016.
- The number to the right of each bar is the school's average annual growth in Scaled Score points.
- The report also indicates the percent increase (or decline) in overall growth.
- Positive percent growth indicates an increase in overall growth for the current school year over the last school year.
- Negative percent growth indicates a decrease in overall growth for the current school year over the last school year.
- The 2-year growth is noted on the left.

PAGES 12-13. END-OF-YEAR MEAN SCALED SCORE (SS) COMPARISON

- The charts display the average Scaled Scores for each grade level in Reading and Mathematics.
- Both charts compare school-level SS averages to archdiocesan SS averages and to the National SS averages for each grade level.

PAGES 14-15. THREE-YEAR COHORT TRENDS – END-OF-YEAR MEAN SCALED SCORES (SS) BY GRADE

- The two charts display the school's average end-of-year SS for each grade level in Reading and Mathematics for each academic year - 2014, 2015 and 2016.

PAGES 16-17. PERFORMANCE BANDS (NATIONAL PERCENTILE RANK in QUARTILES)

- The report displays the percentage of students in each quartile in Reading and Mathematics in grades 2-8.
- The student EOY NPR minimal target is 50; the school-level EOY NPR target is 80% of students scoring in the top two quartiles.

PAGES 18. BLUE RIBBON REPORT

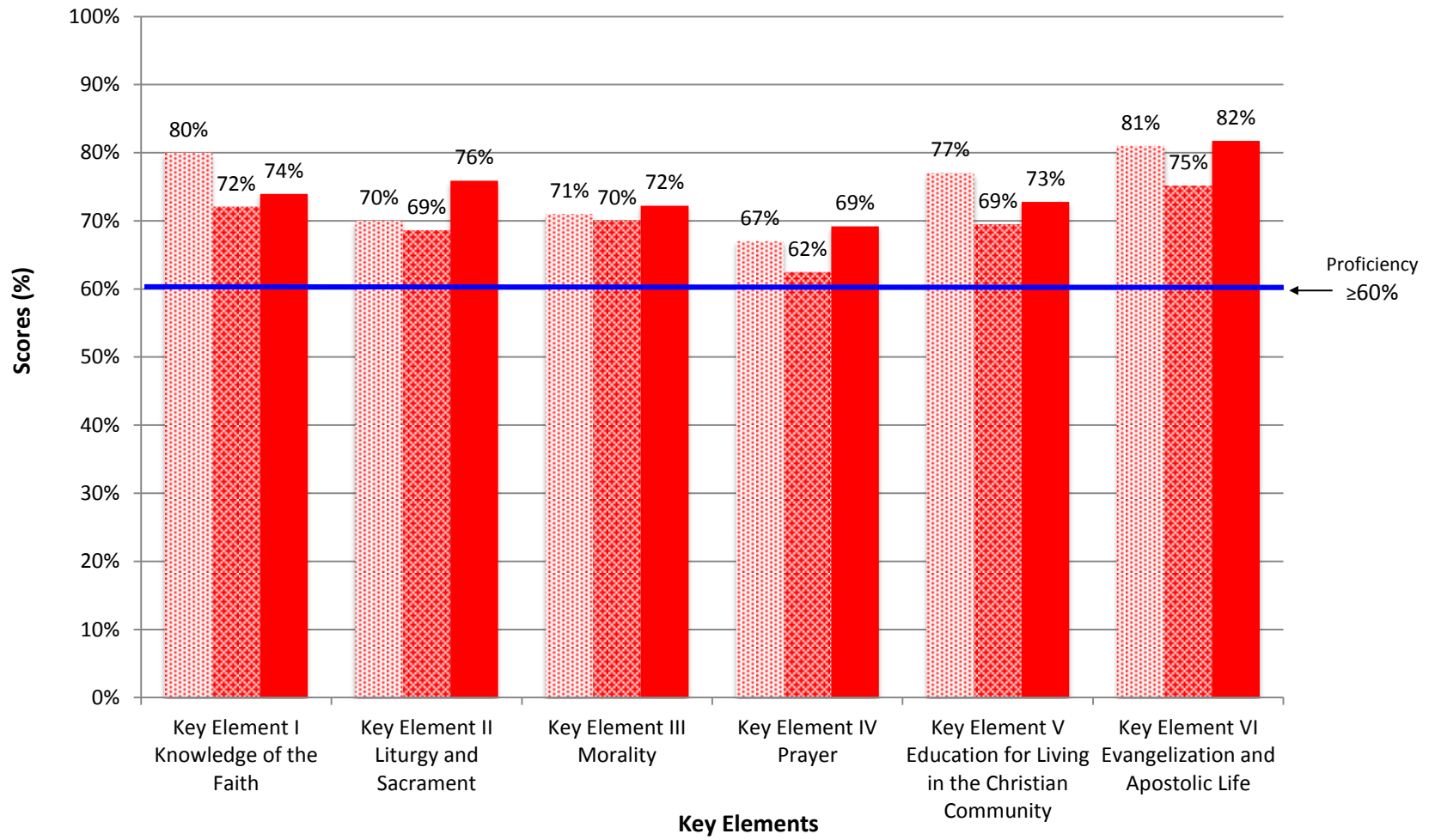
- Displayed on this chart are the school's end-of-year, grade level percentiles in Reading and Mathematics side-by-side with the National Blue Ribbon percentiles in Reading and Mathematics for award eligibility. The National Blue Ribbon percentiles represent the cut scores for the top 15% of schools, nationally.
- In order for the school's scores to qualify for eligibility for the National Blue Ribbon Award, the school's percentiles must exceed the National Blue Ribbon percentiles for grades 3-8* in both Reading and Mathematics. (All student scores are included in the Blue Ribbon report calculations.)

*Grade 2 test scores are not included in the USDE / CAPE application review.



Archdiocese of Washington
Saint John the Baptist School
2016 Faith Knowledge Assessment
Overall Score by Key Elements of the Religion Curriculum
(Forming Disciples for the New Evangelization)

2014
2015
2016





**Archdiocese of Washington
Saint John the Baptist School
2016 Faith Knowledge Assessment**

Overall Score by Grade-Level and Strand of the Religion Curriculum Standards

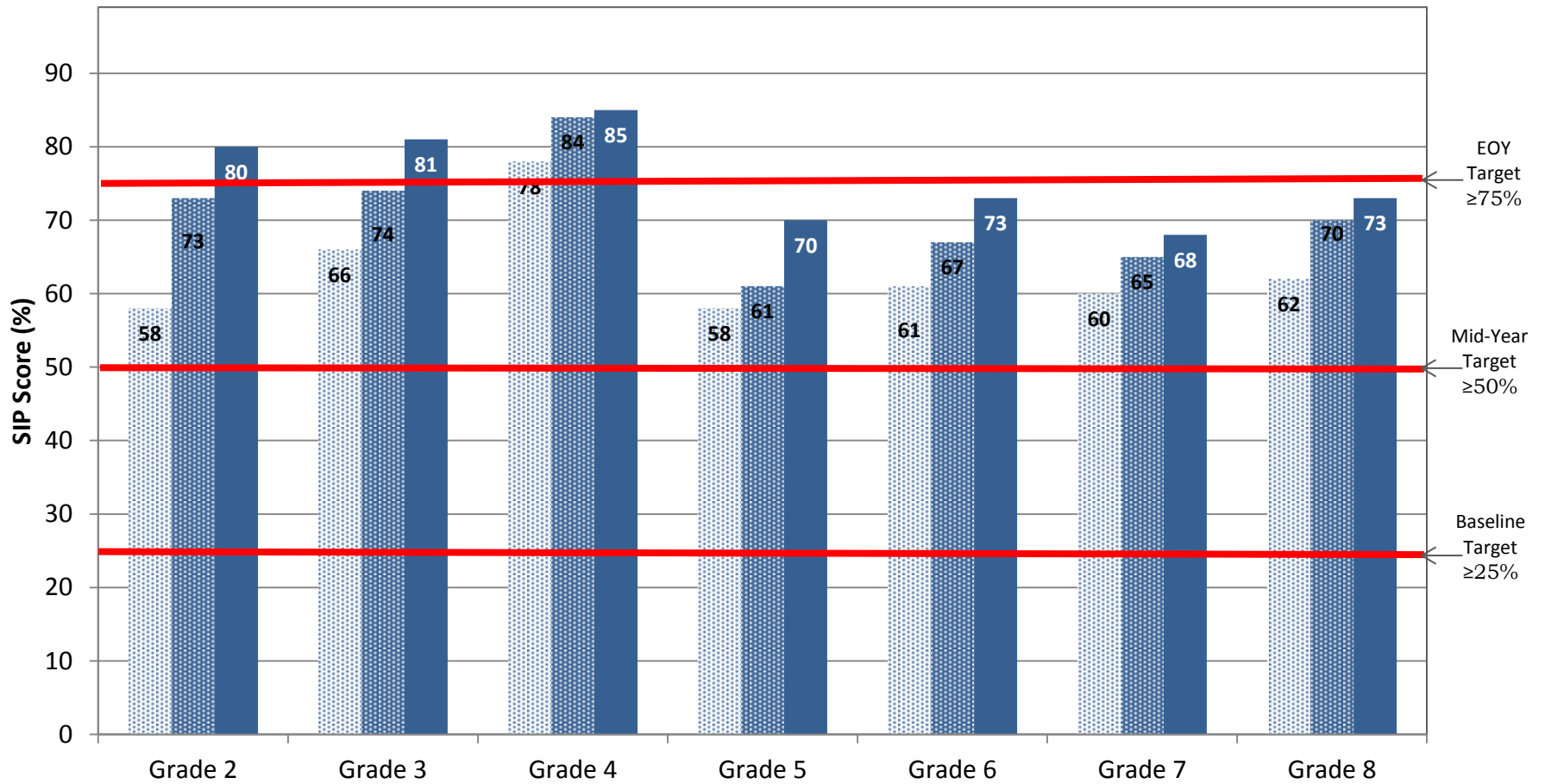
| Key Element | Forming Disciples for the New Evangelization Curriculum Standard | Grade 3 | Grade 4 | Grade 5 | Grade 6 | Grade 7 | Grade 8 |
|---|--|------------------|---------|---------|---------|---------|---------|
| | | <i>% Correct</i> | | | | | |
| Key Element I - Knowledge of the Faith | Standard 1: Creed | 95% | 84% | 84% | 87% | 71% | 65% |
| | Standard 2: Scripture | 69% | 87% | 86% | 36% | 67% | 80% |
| Key Element II - Liturgy and Sacrament | Standard 3: Sacraments | 85% | 75% | 89% | 69% | 82% | 70% |
| | Standard 4: Liturgy | 94% | 57% | 59% | 38% | 88% | 96% |
| Key Element III - Morality | Standard 5: Conscience | 100% | 66% | 72% | 92% | 60% | 94% |
| | Standard 6: Christian Living | 99% | 61% | 52% | 63% | 80% | 71% |
| Key Element IV - Prayer | Standard 7: Prayer | 77% | 88% | 74% | 53% | 59% | 74% |
| Key Element V - Education for Living in the Christian Community | Standard 8: Catholic Church | 74% | 33% | 100% | 37% | 75% | 89% |
| | Standard 9: Ecumenism | 97% | 3% | 67% | 65% | 85% | 43% |
| | Standard 10: Catholic Principles and Relationships | 100% | 83% | 78% | 100% | 43% | 68% |
| | Standard 11: Vocation | 87% | 77% | 100% | 72% | 73% | 89% |
| Key Element VI - Evangelization and Apostolic Life | Standard 12: Catholic Social Teaching | 100% | 78% | 93% | 77% | 100% | 96% |
| | Standard 13: Inter-Religious Dialogue | 100% | 77% | 33% | 79% | 77% | 57% |
| | Standard 14: Missionary Vocation | 97% | 93% | 85% | 72% | 80% | 61% |

Performance Bands: **Green**=Mastery | **Yellow**=Proficiency | **Red**=Needs Further Instruction



Archdiocese of Washington
Saint John the Baptist School
2015-16 Scantron Performance Series
Overall Standards Item Pool Scores (SIP-%)
Mathematics

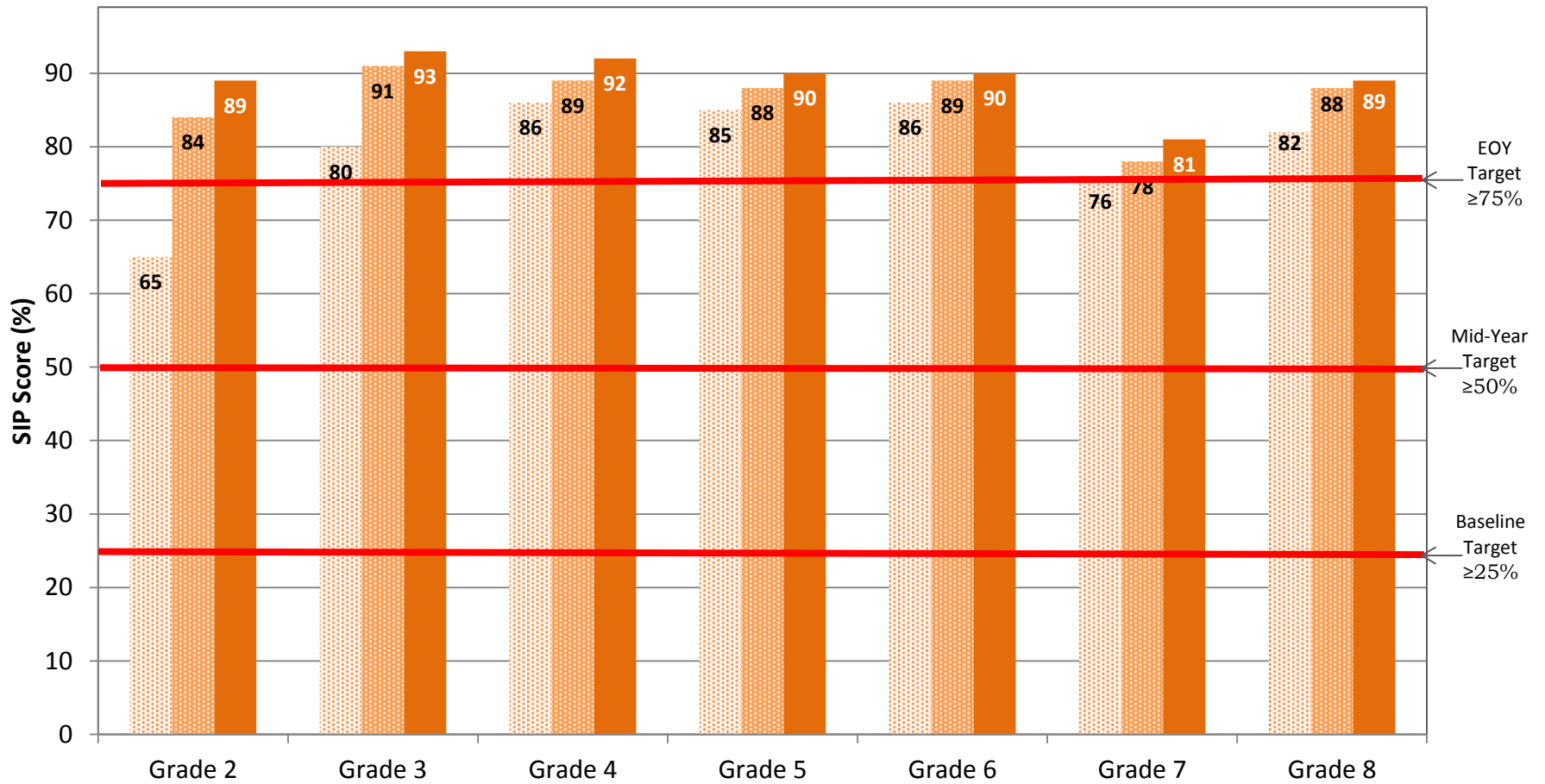
Math (Fall) Math (Winter) Math (Spring)





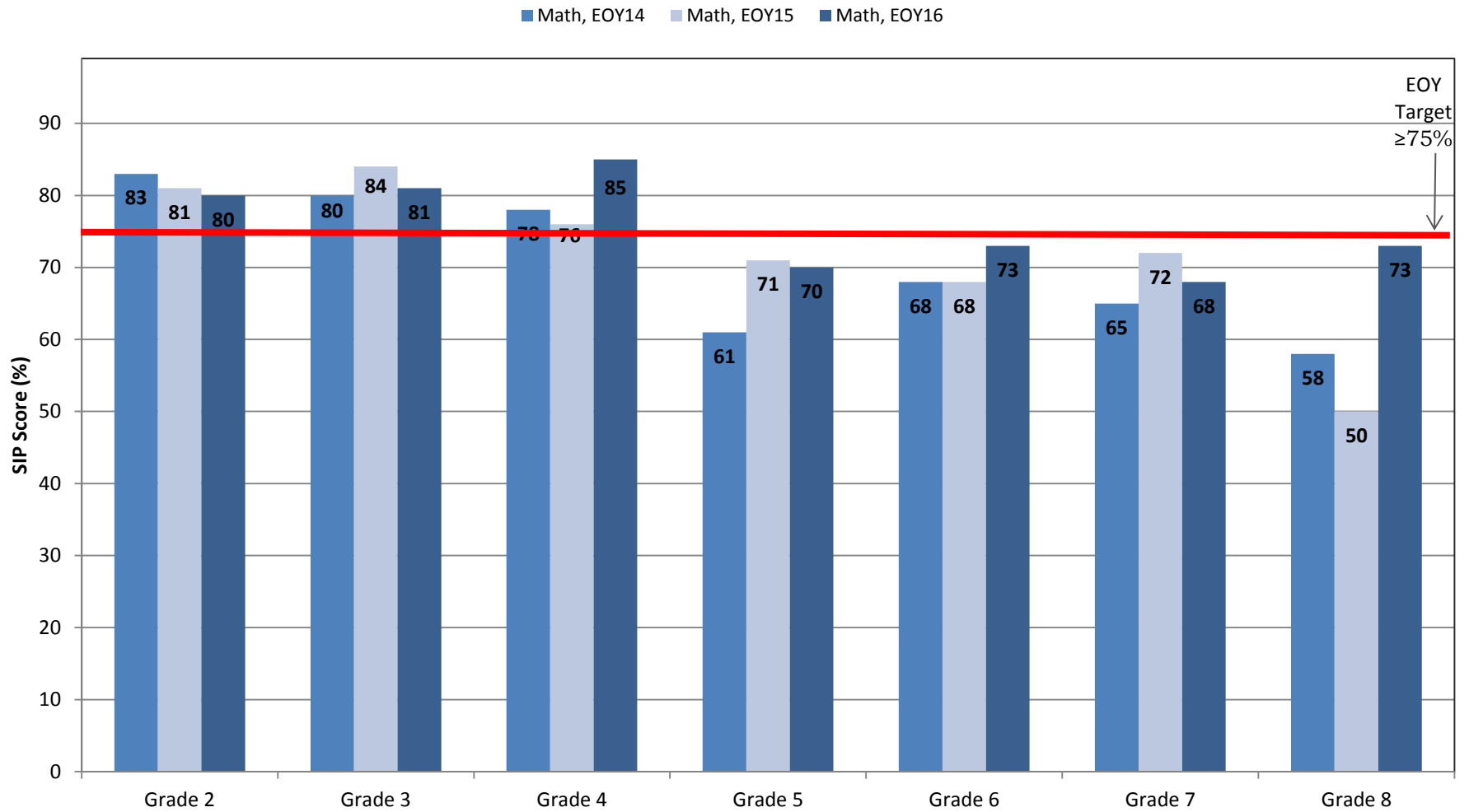
Archdiocese of Washington
Saint John the Baptist School
2015-16 Scantron Performance Series
Overall Standards Item Pool Scores (SIP-%)
Reading

Reading (Fall) Reading (Winter) Reading (Spring)



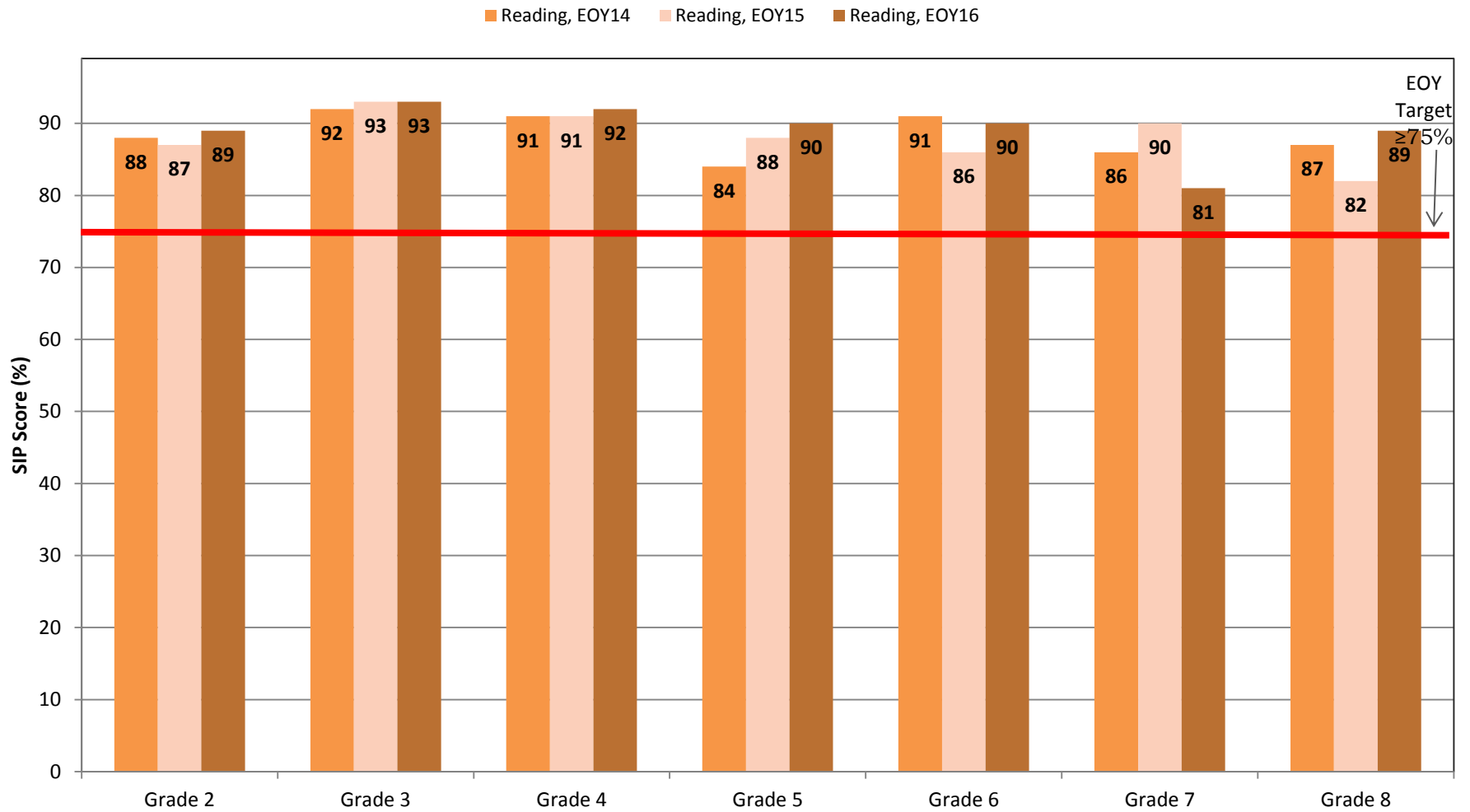


Archdiocese of Washington
Saint John the Baptist School
2015-16 Scantron Performance Series
YOY Overall Standards Item Pool Scores (SIP-%)
Mathematics



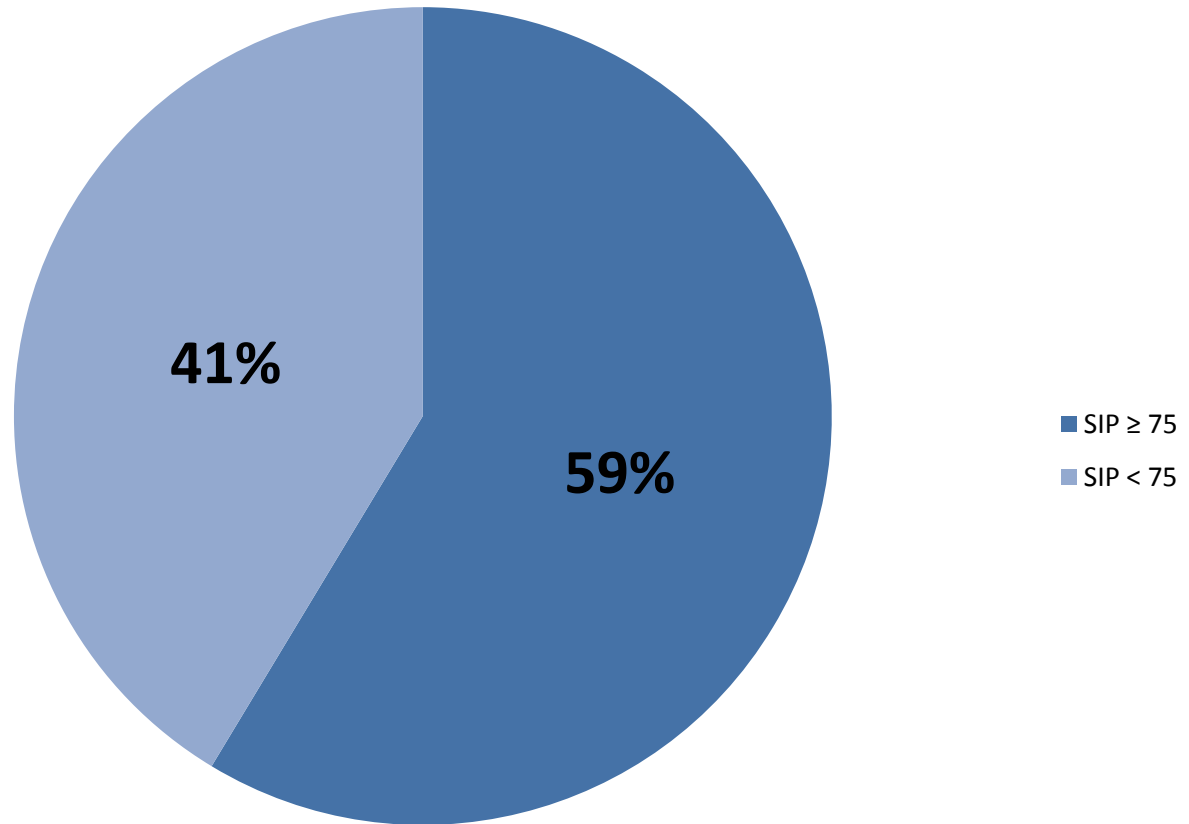


Archdiocese of Washington
Saint John the Baptist School
2015-16 Scantron Performance Series
YOY Overall Standards Item Pool Scores (SIP-%)
Reading



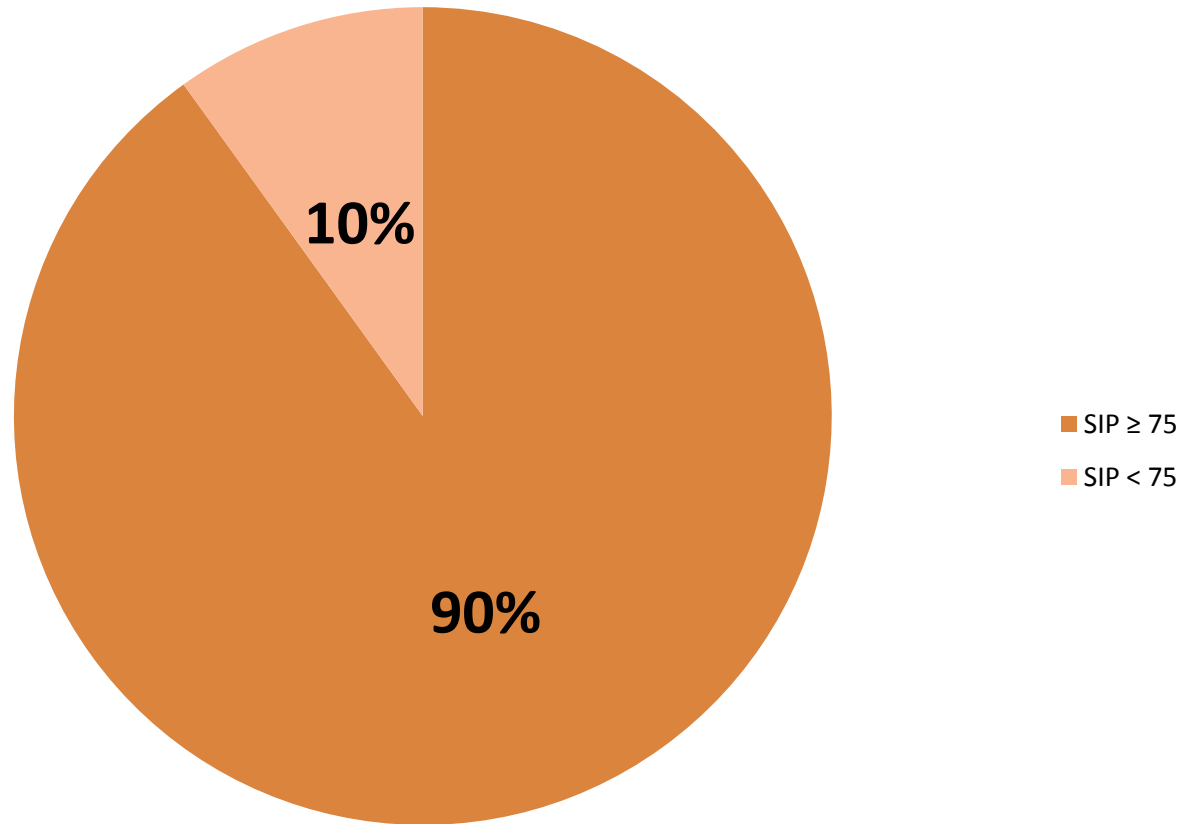


**Archdiocese of Washington
Saint John the Baptist School
2015-16 Scantron Performance Series
EOY SIP Score Target Met/Not Met
Mathematics**



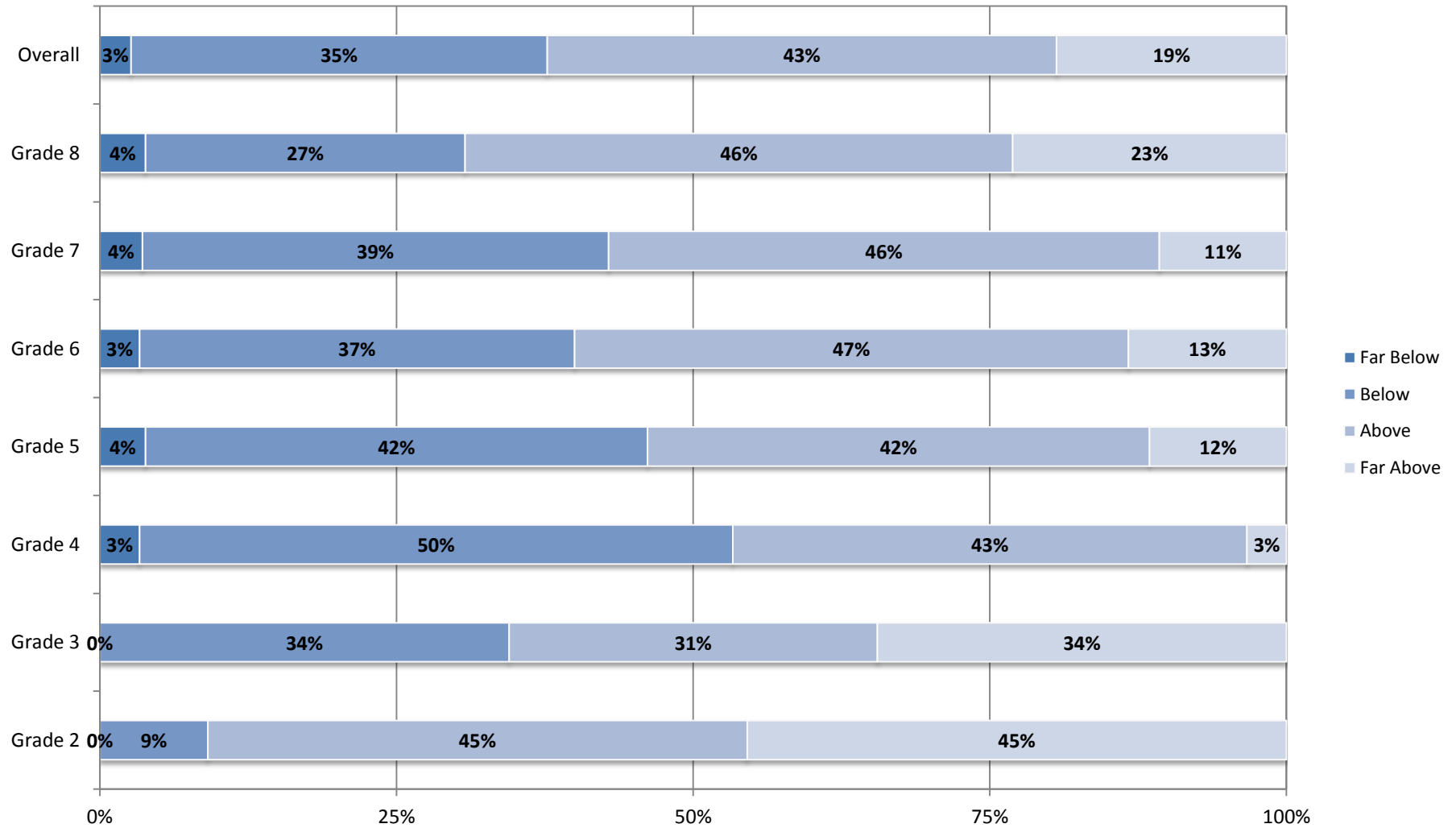


**Archdiocese of Washington
Saint John the Baptist School
2015-16 Scantron Performance Series
EOY SIP Score Target Met/Not Met
Reading**



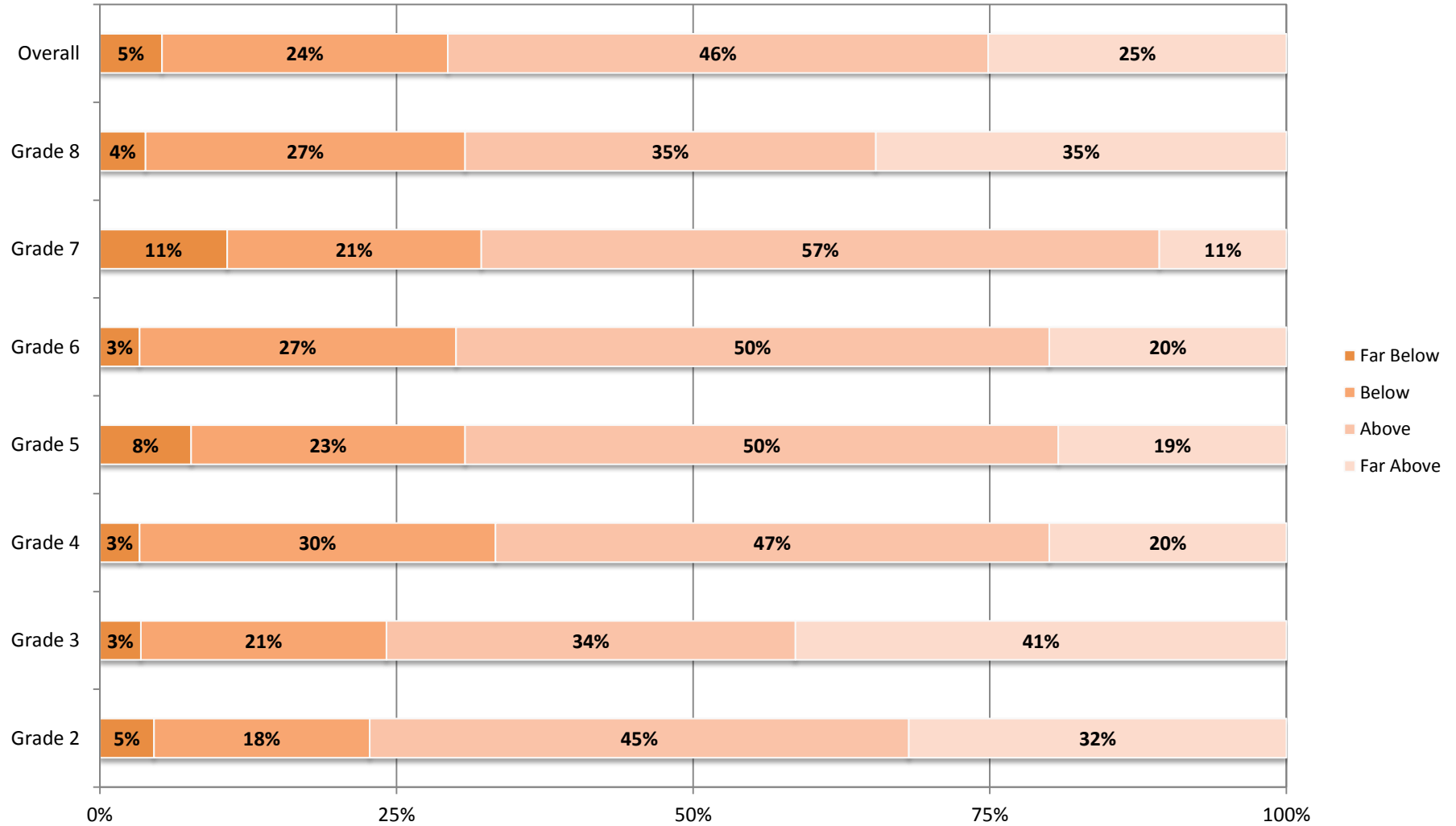


**Archdiocese of Washington
Saint John the Baptist School
2015-16 Scantron Performance Series
Gains Analysis, Mathematics**



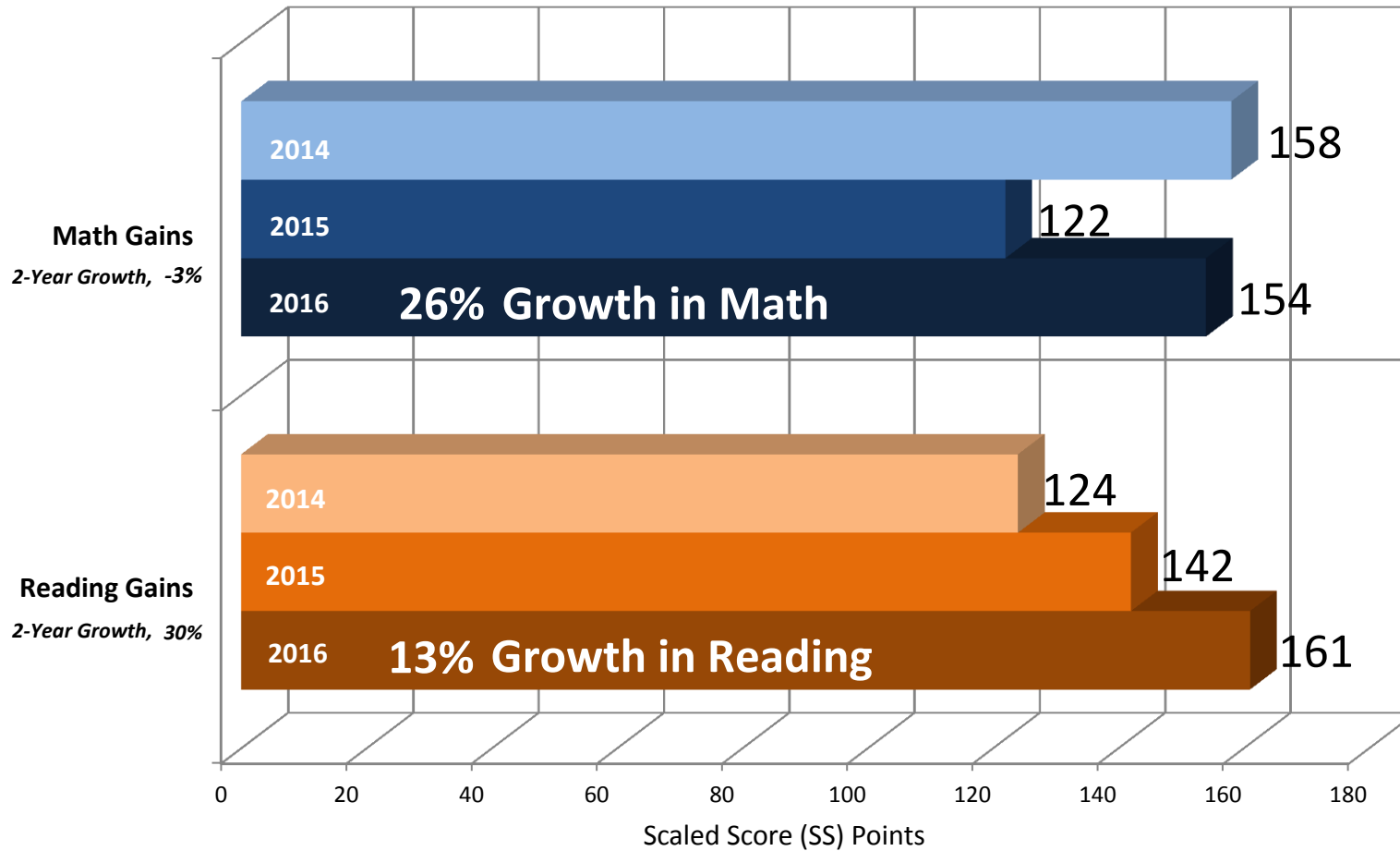


**Archdiocese of Washington
Saint John the Baptist School
2015-16 Scantron Performance Series
Gains Analysis, Reading**



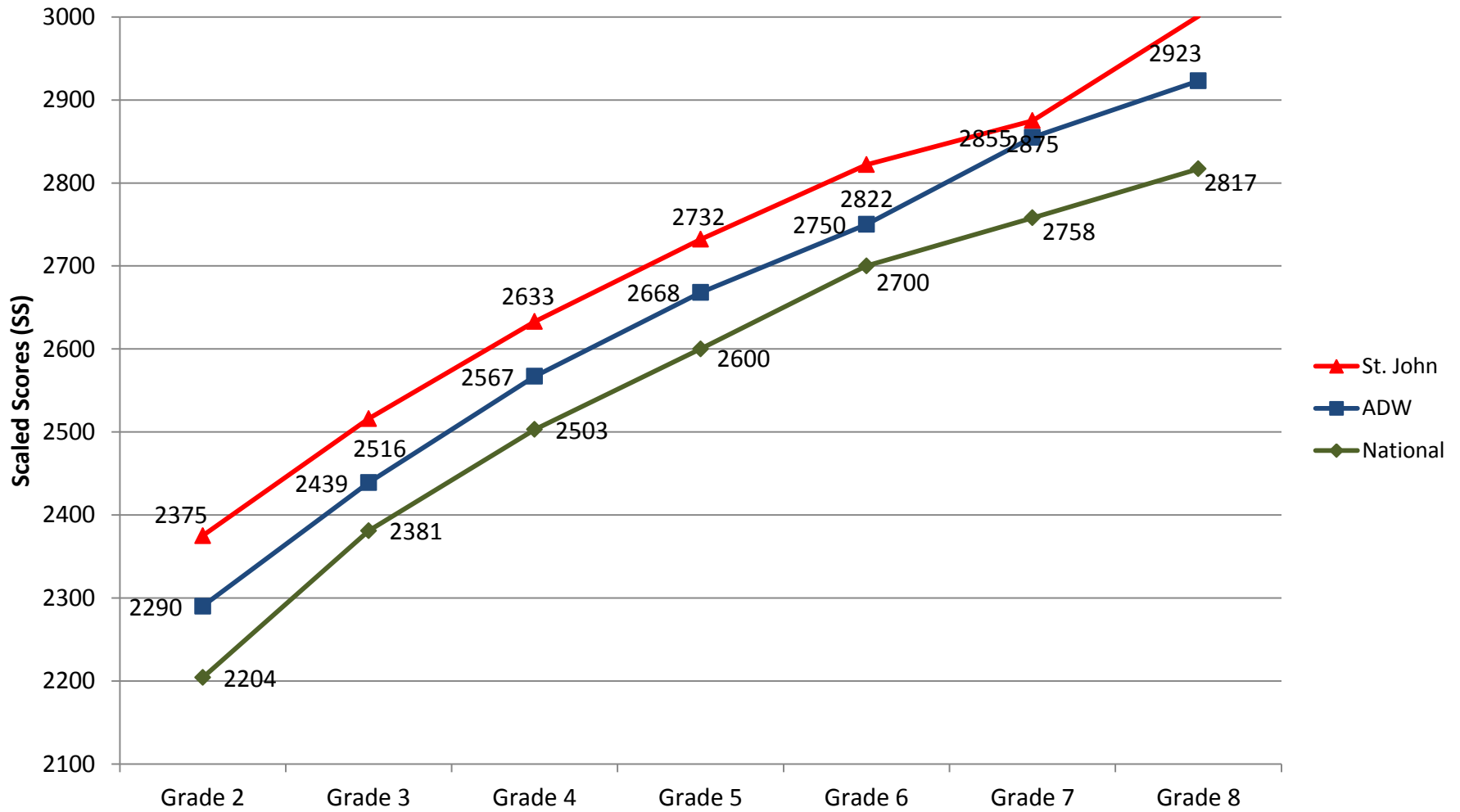


Archdiocese of Washington
Saint John the Baptist School
2015-16 Scantron Performance Series
YOY Overall Growth
Reading and Mathematics



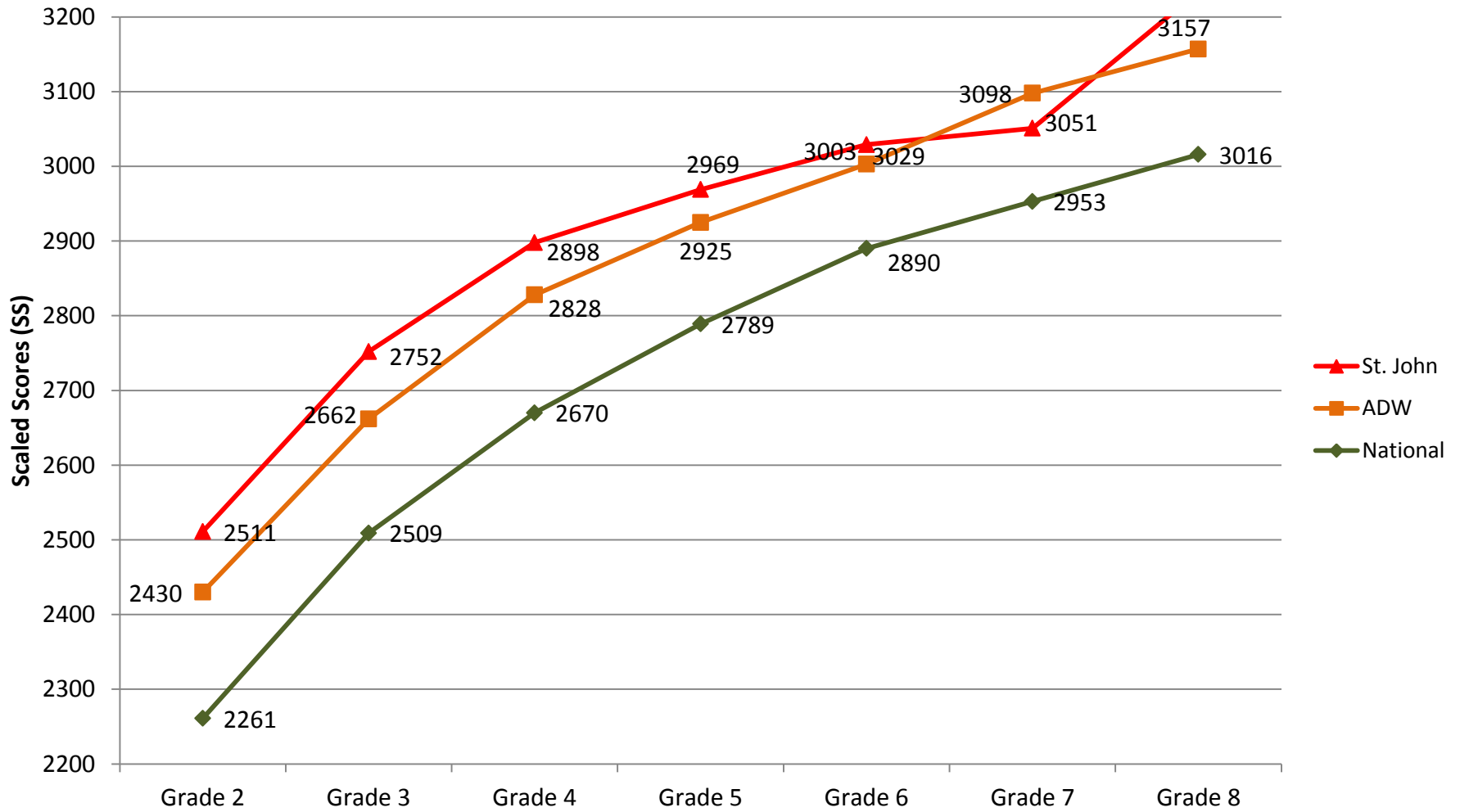


Archdiocese of Washington
Saint John the Baptist School
2015-16 Scantron Performance Series, EOY Test
ADW Mean Scaled Scores v. National Mean Scaled Scores
Mathematics





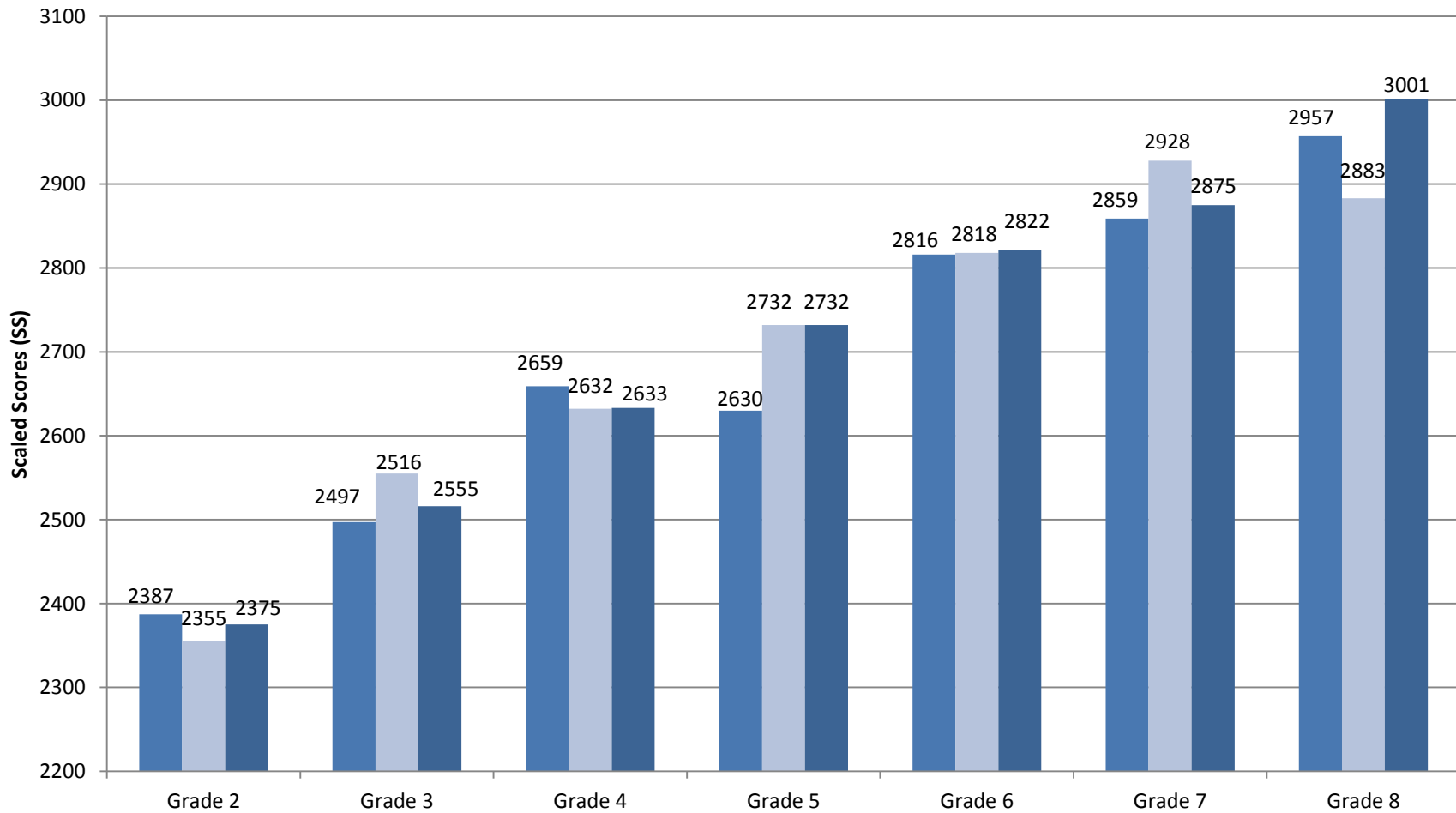
**Archdiocese of Washington
Saint John the Baptist School
2015-16 Scantron Performance Series, EOY Test
ADW Mean Scaled Scores v. National Mean Scaled Scores
Reading**





**Archdiocese of Washington
Saint John the Baptist School
2015-16 Scantron Performance Series
3-Yr Cohort Trends - EOY Mean Scaled Scores by Grade
Mathematics**

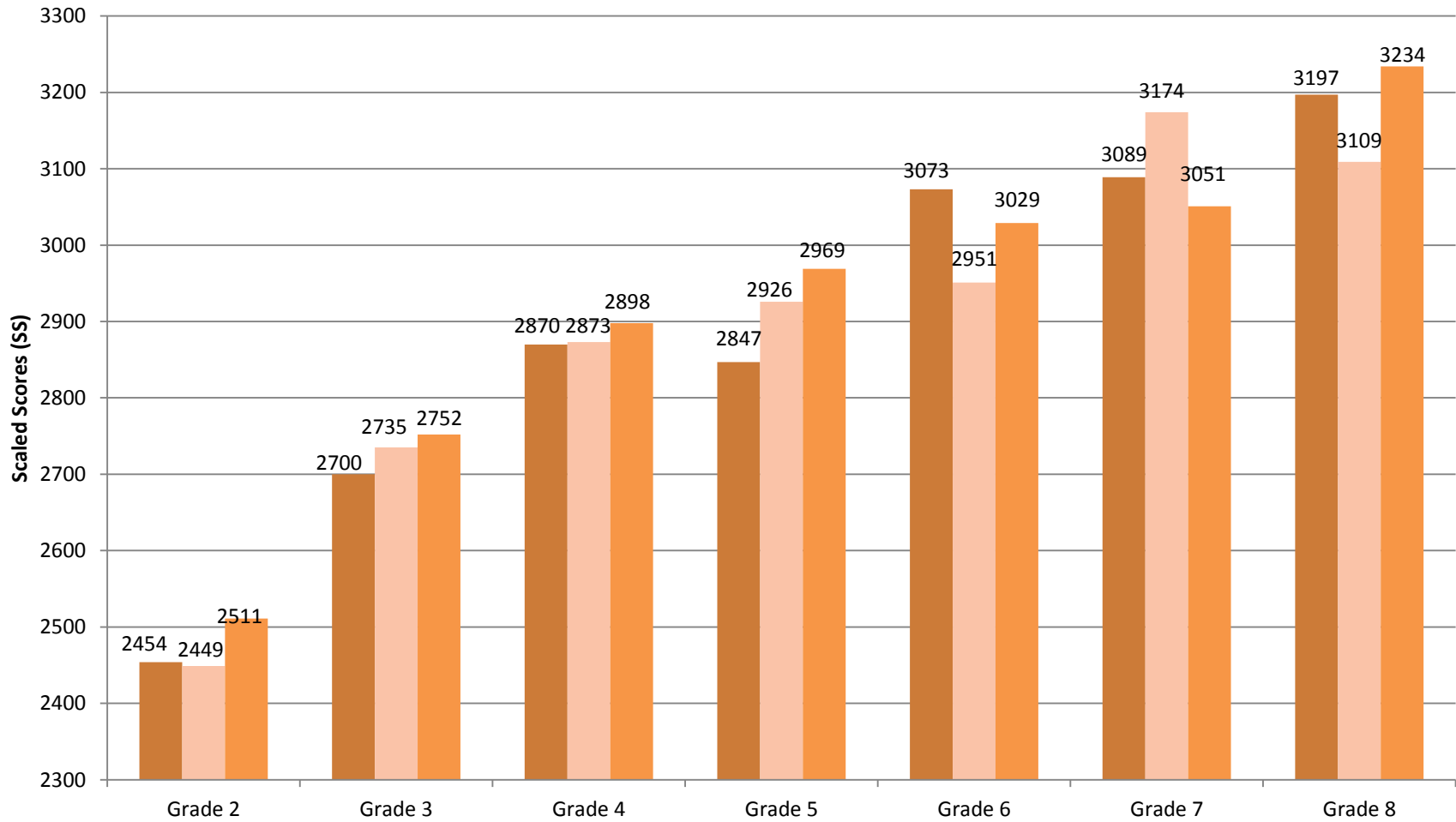
- Math, 2014
- Math, 2015
- Math, 2016





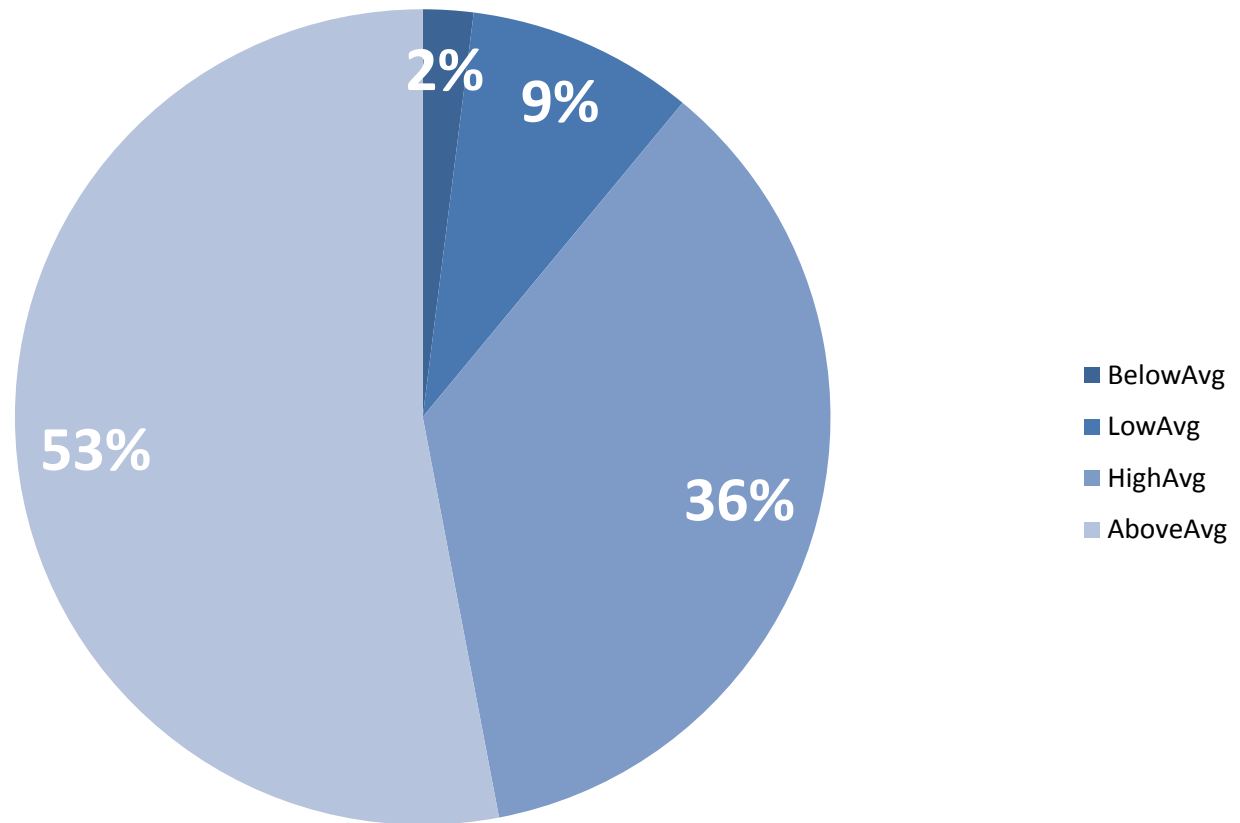
**Archdiocese of Washington
Saint John the Baptist School
2015-16 Scantron Performance Series
3-Yr Cohort Trends - EOY Mean Scaled Scores by Grade
Reading**

- Reading, 2014
- Reading, 2015
- Reading, 2016



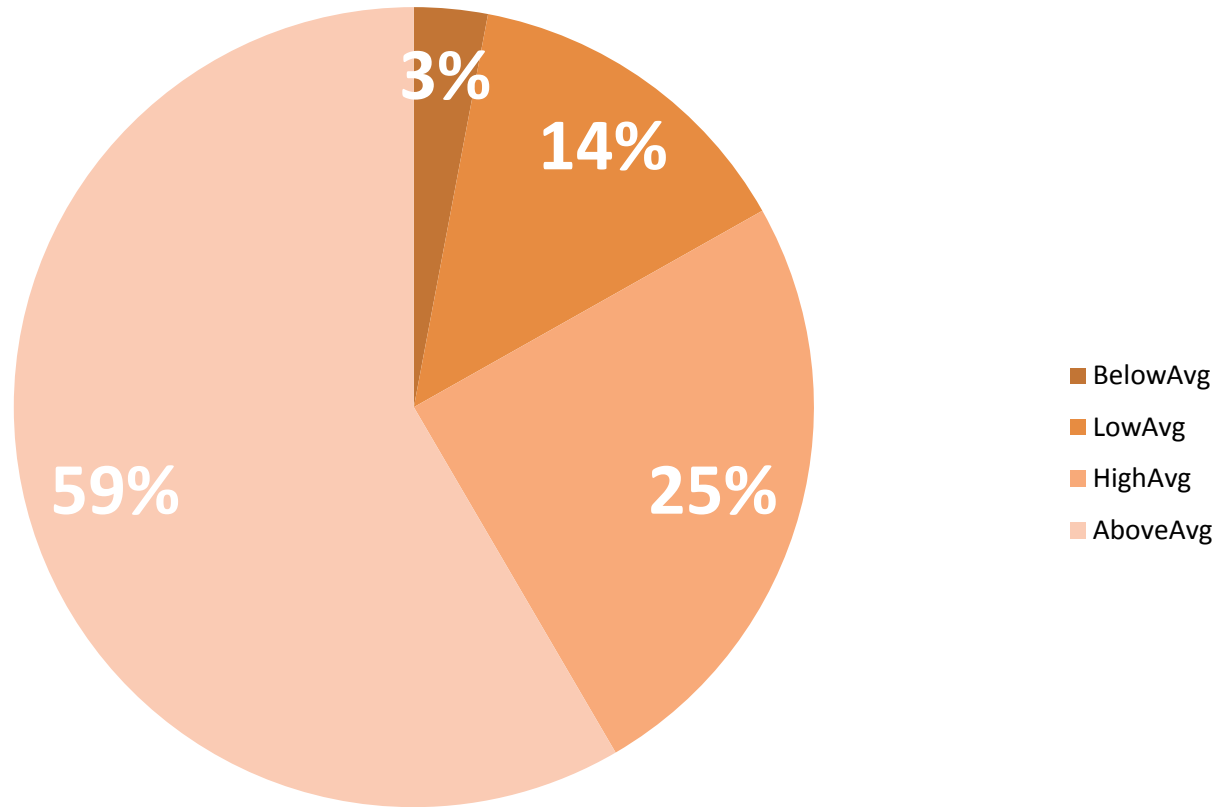


**Archdiocese of Washington
Saint John the Baptist School
2015-16 Scantron Performance Series, EOY Test
Performance Bands (NPR Quartiles)
Mathematics**





**Archdiocese of Washington
Saint John the Baptist School
2015-16 Scantron Performance Series, EOY Test
Performance Bands (NPR Quartiles)
Reading**





Archdiocese of Washington
Saint John the Baptist School
2015-16 Scantron Performance Series, EOY Test
School Percentiles v. National Blue Ribbon Percentiles (Spring)
Reading and Mathematics

■ St. John Reading ❖ Blue Ribbon Reading ■ St. John Math ❖ Blue Ribbon Math

